



# WELLINGTON EASTERN SUBURBS PROBUS CLUB

18<sup>th</sup> February 2025

NEWSLETTER 271

## Report on meeting held on 12<sup>th</sup> February 2025

Membership	64	Attendance	44
Apologies	5		

President Marie welcomed members to the 1<sup>st</sup> meeting of the year.

### Obituary

We sadly advise the death of member Aldwyn Cockburn. Aldwyn joined the club in 2016 and was a member of the walking group and lunch group. He was elected President in 2019 and during this time organized a lunch outing to Rimutaka prison, with the lunch being cooked and served by the prisoners. He will be missed by us all.

### Members Addresses

President Marie reminded members that if your address information has changed please advise Brian to update our member register.

### Next Meeting

As usual the March meeting will include the annual meeting, and as usual we are seeking members for the committee in particular a Vice President and guest speaker assistant/organizer. Please give consideration to assisting the club by joining the committee for 2025.

### Annual Subs

The subs for 2025 remain the same at \$40. Subs are now due and can be paid by cash at our meeting or by internet banking to the club bank account below.

### Bank Account

Wellington Eastern Suburbs Probus Club – BNZ 02-0520-0153465-0

### Club Micro Website:

<http://probussouthpacific.org/microsites/wellingtoneasternsuburbs>



Click the above to access the website.

Club Email Address: [wellingtoneasternsuburbsm@probusclubs.com.au](mailto:wellingtoneasternsuburbsm@probusclubs.com.au)

#### PRESIDENT

Marie Pearce

#### VICE PRESIDENT

Vacant

#### COMMITTEE

Annette Barnes

Secretary

Brian Cattermole

Newsletter Editor

Elaine Chang

Peter Chik

Finance

Chrissy Gall

Morning Tea

June Inkpen

Deryk McNamara

Guest Speakers

Val Norrish

Simon Reynolds

Almoner

Jean Glen

## THE CLUB MEETS

2nd WEDNESDAY OF  
EACH MONTH  
10:00AM

SEATOUN BOWLING  
CLUB

DUNDAS ST  
SEATOUN

Guests Welcome

Annual fees \$40

Monthly morning  
tea fee \$5

## SPECIAL INTEREST GROUPS

Walking Group

Lunch Group

Cinema Group

Apple & iPad Group

Coffee Group

## Guest Speaker

Guest speaker **Navina Clemerson** gave a very informative talk on her book 'There was a garden in Nuremberg'. She was born in London to refugee parents but spent time in the Netherlands and Italy before coming to Wellington. Navina explained that the book is a novel but the people and events in the book are the true story of her mother, and grandparents during the 1930's Nazi persecution of Jews leading up to WW2. To avoid family criticism regarding the accuracy of the story she wrote it as a novel. It also allowed her to fill in the gaps in the story. The book was inspired by the stories her mother told her during her life.

The book not only tells the story of the family but also the men who were responsible for carrying out the Nazi doctrine in Nuremberg. The reign of terror by the Nazis included the destruction of the much admired, Nuremberg Mosque. The title of the book comes from the beautiful garden of the house (which still stands), where Navina's mother grew up. Navina spoke of the extensive research that she carried out and the places visited along with the many people who assisted in obtaining the true history of the times. She explained that throughout Europe there are 'stumbling stones' – plaques outside homes and premises of the people whose homes were raided and sent to Nazi camps. The book has been highly rated in many reviews.

## Walking Group



The walking group meet each Monday at 10:30am weather permitting. The walk is approximately 1 hour followed by coffee and a chat at a convenient café. Starting venue advised by email on Saturday evening prior to the Monday walk.

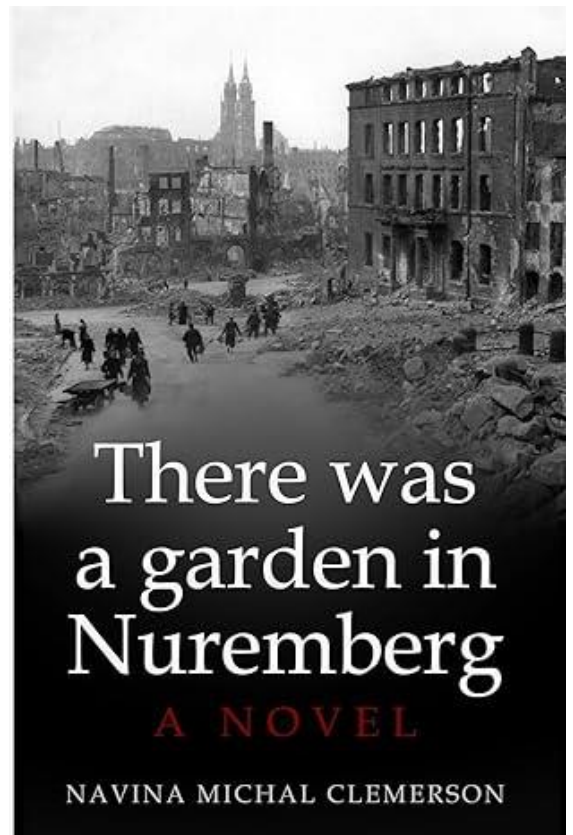
Contact Simon Reynolds 0278136950 [simonofporirua@yahoo.co.nz](mailto:simonofporirua@yahoo.co.nz)

## Apple Computer & iPad Group



Meet after monthly Probus meetings second Wednesday of each month at Deryk's place. Contact Deryk McNamara 388 8805

The group started as an iPad group but has evolved into an iPhone and technology group.





### Cinema Group

The cinema group meet every 1<sup>st</sup> Tuesday in the month. The next film is 4<sup>th</sup> March. The February film was 'A Complete Unknown' at the Lighthouse Cuba.

Contact: **Anne Morris**

[anneimelda.morris@gmail.com](mailto:anneimelda.morris@gmail.com)

**0272213901**



### NOTES FOR YOUR DIARY

2025 Subs due in March \$40

### Lunch Group

The lunch group meet every month. The next lunch is on Wednesday 26<sup>th</sup> February at the Fisherman's Table Main Road Paekakariki. Anyone requiring transport Please contact Chrissy.



shutterstock - 161123954

Bookings essential

**Please contact: Chrissy Gall 388 6786**

[chrissyolgagall@gmail.com](mailto:chrissyolgagall@gmail.com)

### Coffee Group

The coffee group meet every Friday and Sunday at 2:30pm at The Park Kitchen, Park Road, Miramar. All members are welcome – just turn up.

### Birthday Wishes

Happy birthday in March to:

Annette Barnes

5<sup>th</sup>

Betty McArthur

20<sup>th</sup>

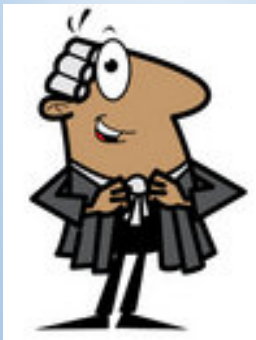
Marie Pearce

29<sup>th</sup>



### Legal Stuff

*This newsletter is for the Probus Club members only and is not to be used for any other purpose*



### Almoner

If you are aware of any members who are suffering ill-health, please contact our almoner. **Jean Glen 934 8107 [johnjean4425@gmail.com](mailto:johnjean4425@gmail.com)**

### Guest Speaker for February

The guest speaker for March will be Gerald Dawson whose subject is – Retirement Villages – changes in the wind?

### Thought for February

Money does not go very far these days but it seems to stay away a long time.

