



# WELLINGTON EASTERN SUBURBS PROBUS CLUB

30<sup>th</sup> January 2025

NEWSLETTER 270

## PRESIDENT

Marie Pearce

## VICE PRESIDENT

Vacant

## COMMITTEE

Annette Barnes

Secretary

Brian Cattermole

Newsletter Editor

Elaine Chang

Peter Chik

Finance

Chrissy Gall

Morning Tea

June Inkpen

Deryk McNamara

Guest Speakers

Val Norrish

Simon Reynolds

Almoner

Jean Glen



Membership 64

## **Next Meeting**

Our first meeting of 2025 will be held on **February 12<sup>th</sup>** at Seatoun Bowling Club, Dundas St, Seatoun at 10am.

As usual the March meeting will include the annual meeting, and as usual we are seeking members for the committee in particular a new guest speaker organizer. Please give consideration to assisting the club by joining the committee for 2025.

## **Annual Subs**

The subs for 2025 remain the same at \$40. Subs are due in March and can be paid at our meeting or by internet banking to the club bank account below.

## **Bank Account**

Wellington Eastern Suburbs Probus Club – BNZ 02-0520-0153465-00

## **Club Micro Website:**

<http://probussouthpacific.org/microsites/wellingtoneasternsuburbs>



Click the above to access the website.

**Club Email Address:** [wellingtoneasternsuburbsm@probusclubs.com.au](mailto:wellingtoneasternsuburbsm@probusclubs.com.au)

## THE CLUB MEETS

2nd WEDNESDAY OF  
EACH MONTH  
10:00AM

SEATOUN BOWLING  
CLUB

DUNDAS ST  
SEATOUN

Guests Welcome

Annual fees \$40

Monthly morning  
tea fee \$5

## SPECIAL INTEREST GROUPS

Walking Group

Lunch Group

Cinema Group

Apple & iPad Group

Coffee Group

## Xmas Party

The Xmas party was once again at the Pines with an excellent attendance of members and guests from the Rita Angus Retirement Village Kilbirnie. A big thank you to Margaret Davis who organized the event.



## Probus Worldwide

Probus is a Worldwide movement in 23 countries. It originated in UK with the development of two community based social clubs in the 1960's. In 1965 the Campas Club was formed by the Rotary club of Welwyn, Garden City just north of London. In 1966, the first Probus Club was established by the Rotary Club of Caterham. Both clubs were formed to meet the social and intellectual needs of retired businessmen. When it became clear that the clubs were servicing the same need, the Campus Club changed its name to Probus.

The 1st Probus Club in the South Pacific was formed on the Kapiti Coast in 1974 and was sponsored by the Rotary Club of Paraparumu. The 1<sup>st</sup> Probus Club for women was the Ladies Club of St Heliers Auckland. Following the concept of single gender Clubs the concept of combined gender clubs was developed.

In 1984 there were 44 clubs in NZ and Australia and the 'Probus Information Committee' was formed in Australia the forerunner to Probus South Pacific. The organization now has about 110,000 members. Each year our club pays a capitation fee which currently stands at \$10 per member to PSP. In return we have the right to use the Probus name, we are provided with an email address and website and the 'Active Retirees' magazine.

## Walking Group



The walking group meet each Monday at 10:30am weather permitting. The walk is approximately 1 hour followed by coffee and a chat at a convenient café. Starting venue advised by email on Saturday evening prior to the Monday walk.

Contact Simon Reynolds 0278136950 [simonofporirua@yahoo.co.nz](mailto:simonofporirua@yahoo.co.nz)



## NOTES FOR YOUR DIARY

2025 Subs due in March \$40

### Legal Stuff

*This newsletter is for the Probus Club members only and is not to be used for any other purpose*



## Apple Computer & iPad Group



Meet after monthly Probus meetings second Wednesday of each month at Deryk's place. **Contact Deryk McNamara 388 8805**

The group started as an iPad group but has evolved into an iPhone/Apple Macintosh/General technology group.

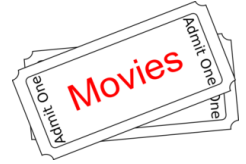
## Cinema Group

The cinema group meet every 1<sup>st</sup> Tuesday in the month.

Contact: **Anne Morris**

[anneimelda.morris@gmail.com](mailto:anneimelda.morris@gmail.com)

**0272213901**



## Lunch Group

The lunch group meet every month.



shutterstock - 161123954

Bookings essential

**Please contact: Chrissy Gall 388 6786**

[chrissyolgagall@gmail.com](mailto:chrissyolgagall@gmail.com)

## Coffee Group

The coffee group meet every Friday and Sunday at 2:30pm at The Park Kitchen, Park Road, Miramar. All members are welcome – just turn up.

## Birthday Wishes

Happy birthday in February to:

John Kontonos

12<sup>th</sup>

Don Bandaranayake

14<sup>th</sup>

Jean Glen

20<sup>th</sup>

John Sigsworth

20<sup>th</sup>



## Almoner

If you are aware of any members who are suffering ill-health, please contact our almoner. **Jean Glen 934 8107 [johnjean4425@gmail.com](mailto:johnjean4425@gmail.com)**

## Guest Speakers for February

Navina Clemerson, who was born in London and whose parents were refugees from the Nazis.

## Thought for January

Failure is the path of least resistance.

