



WELLINGTON EASTERN SUBURBS PROBUS CLUB

20th August 2024

NEWSLETTER 266

Report on Meeting held on 14th August 2024

Membership	68	Attendance	31
Apologies	10		

President Marie chaired the meeting and welcomed members.

Profile Speaker

John Christie showed a 1913 photograph of a building on the site of the current Seatoun Bowling Clubrooms. The building was used for a variety of activities including bowling, tennis, croquet, football, etc. The flag pole which is still there today is also in the photo.

Outings

A cold, wet miserable day did not deter these members of our Probus club visiting Government House. It was interesting viewing the photos of all the Governor Generals and some of their Coats of Arms and their meanings. Obviously, a tour of the gardens was off the agenda. Some members who attended gave an account of the visit.



Bank Account

Wellington Eastern Suburbs Probus Club – BNZ 02-0520-0153465-00

Club Micro Website:

<http://probussouthpacific.org/microsites/wellingtoneasternsuburbs>



Click the above to access the website.

Club Email Address: wellingtoneasternsuburbsm@probusclubs.com.au

PRESIDENT

Marie Pearce

VICE PRESIDENT

Vacant

COMMITTEE

Annette Barnes

Secretary

Brian Cattermole

Newsletter Editor

Elaine Chang

Peter Chik

Finance

Chrissy Gall

Morning Tea

June Inkpen

Deryk McNamara

Guest Speakers

Val Norrish

Simon Reynolds

Almoner

Jean Glen

THE CLUB MEETS

2nd WEDNESDAY OF
EACH MONTH
10:00AM

SEATOUN BOWLING
CLUB

DUNDAS ST
SEATOUN

Guests Welcome

Annual fees \$40

Monthly morning
tea fee \$5

SPECIAL INTEREST GROUPS

Walking Group

Lunch Group

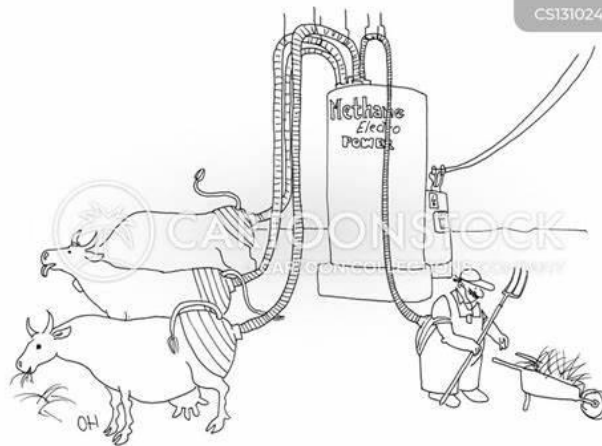
Cinema Group

Apple & iPad Group

Coffee Group

GUEST SPEAKER

Leigh Cately has a background in journalism, editorial management and public relations, in NZ and Australia. She now works in Parliament for the Ministry of Children but has previously worked for Horticulture NZ and Federated Farmers.



Her talk was labelled 'Food, Farts and Farmers'. She began by pointing out that she is not a climate change denier. Her talk was to put the views of the horticulture and farming industry. Worldwide the greatest contributor to climate change is the emissions of carbon dioxide (75%), but in NZ methane is the main contributor. She pointed

out that apart from farm emissions, there are many other sources of methane such as old abandoned mines and oilfields and rice paddies. NZ has been doing a lot of research on how to reduce methane emissions on farms. An example is the GE rye grass which NZ has developed. When eaten by animals the grass reduces the amount of methane produced. This is about to be used in US but because of our laws cannot be used here. The recent announcement by Government to repeal GE laws could make this available.

Farmers and growers are also using enhanced production techniques – growing more for less, breeding lower emission animals, regenerative agriculture through tilling and grazing systems, using non-fossil power such as solar, and improving dairy shed efficiency. An electric tractor has been developed in NZ, and electric tools and are being used. The number of farm animals in NZ is dropping, particularly dairy herds in some part due to tightening up of water access by councils.

Leigh spoke of the problem of fertile farmland being turned into forestry due to the high price of carbon credits. This is a 'short term fix' and will cause long term problems.

U3A

Catherine Carter President of U3A Eastern Suburbs attended our committee meeting to explore avenues of co-operation between our two clubs. It was agreed to continue contact for further discussions.

Walking Group



The walking group meet each Monday at 10:30am weather permitting. The walk is approximately 1 hour followed by coffee and a chat at a convenient café. Starting venue advised by email on Saturday evening prior to the Monday walk.

Contact Brian Cattermole 386 2055 cattermole.brian@xtra.co.nz

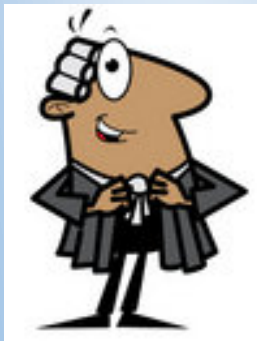


NOTES FOR YOUR DIARY

Xmas party at the Pines at 6pm
Wednesday 11th
December

Legal Stuff

This newsletter is for the Probus Club members only and is not to be used for any other purpose



Apple Computer & iPad Group



Meet after monthly Probus meetings second Wednesday of each month at Deryk's place. **Contact Deryk McNamara 388 8805**

The group started as an iPad group but has evolved into an iPhone/Apple Macintosh/General technology group.

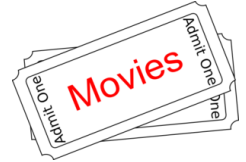
Cinema Group

The cinema group meet every 1st Tuesday in the month. The next cinema meeting will be 2nd September.

Contact: **Anne Morris**

anneimelda.morris@gmail.com

0272213901



Lunch Group

The lunch group meet every month. The next lunch will be held on

Wednesday 28th August at 12 noon at 1841 Bar, 1 Disraeli St, Johnsonville.



shutterstock: 161123954

Bookings essential

Please contact: Chrissy Gall 388 6786

chrissyolgagall@gmail.com

Coffee Group

The coffee group meet every Friday and Sunday at 2:30pm at The Park Kitchen, Park Road, Miramar. All members are welcome – just turn up.

Birthday Wishes

Happy birthday in September to:

John Jenner	9 th	Jan McNamara	16 th
Robin Lindsay	19 th	Jenney Raven	21 st
Tony Sutcliffe	21 st	Simon Reynolds	22 nd



Xmas Party

This year's Xmas party is at the Pines on 11th December at 6pm. Don't miss this highlight of the year, make a note in your diary.

Almoner

Jean reported on long time member Robin Andrews.

If you are aware of any members who are suffering ill-health, please contact our almoner. **Jean Glen 934 8107 johnjean4425@gmail.com**

Next Meeting

The next meeting will be held on Wednesday 11th September at 10am.

Guest Speaker for September

Bill Day who is chairman of the Wellington Hospital's Foundation and will talk about our new Wellington Children's Hospital.

Thought for August

Most of us get what we deserve, but only the successful one's will admit it.

